

WE LEAD.  
WE LEARN.



## WISA®-IMAGE

**WISA-Image is a special plywood overlaid with unique coating system, suitable for both digital and silk screen printing. The panel is a functional substrate for various (outdoor)sign and - advertisement applications and offers a good adhesion for stickers.**

### Bonding

Phenolic resin cross-bonded weather resistant glueing according to EN 314-2 (Plywood - Bonding) class 3 exterior.

### Surface

**Face:** Overlaid with a special coating system (exterior quality).

**Reverse:** Overlaid with a moisture protective dark brown phenolic film.

**Edge protection:** White exterior quality paint.

## Design Data

### Thicknesses

Nominal thickness (mm)	Thickness tolerances (mm)		Minimum weight (kg/m <sup>2</sup> )
	Min	Max	
4	3.7	4.3	2.5
6.5	6.3	7.1	3.7
9	9.0	9.7	5.1
12	11.7	12.7	6.6
15	14.5	15.5	8.2
18	17.3	18.3	9.8

### Standard sizes

1250 x 2500 mm - 1250 x 3050 mm

1500 x 2500 mm - 1500 x 3050 mm

Other dimensions at request, subject to certain minimum quantities.

### Properties of panel surface

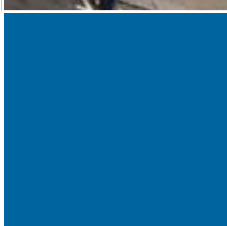
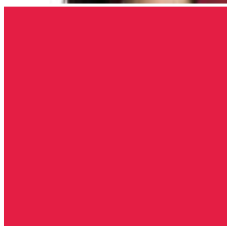
Special exterior high quality coating system.

Standard colour matt white (RAL 9010) .

Hardness (DIN 53505) Shore D 73

Shine value (ISO 2813) 14,7 (60°)





### Technical properties

As per the Handbook of Finnish Plywood.

Coefficient of heat exansion:  $4.7 \cdot 10^{-6} 1/C$

Thermal conductivity  $k = 0,147 \text{ W/mK}$  (birch plywood, mc 9 %)

Average sound insulation values for Finnish plywood (100-3200 Hz)

thickness	sound reduction
6.5 mm	20.0 dB (A)
18 mm	23.8 dB (A)
24 mm	25.3 dB (A)

### Installation instructions

The cut edges and machinings made at site must be sealed carefully with paint suitable for exterior use. Being a wooden material appropriate tools are required.

“The surface should be wiped with alcohol prior to printing”.

### Other Information

This product complies with the following standards and certifications CE-Marked to BS EN 13986:2002 Structural 2+ (Harmonised standard for woodbased panels for use in construction – CPD) EN 636:1997 – Class 3 (Requirements for plywood for use in exterior conditions)

Structural plywood as listed in BS 5268-2:2002

Suitable for use in BS EN 335-3 Hazard Class 3 (fully exposed – structural - exterior)

PEFC-logo 02-34-05 (wood material originates from sustainable managed forests)

ISO 9001:2000 (Quality Management System Standard)

ISO 14001:1996 (Environmental Management System Standards)

Wood being a living material, every panel is unique. Thus a photograph or a sample piece cannot represent all the panels, as regards colours, shades, graining, knots, etc.

For further information of installation, maintenance, disposal, environmental matters etc. please see [www.wisa.com](http://www.wisa.com) or contact your supplier or UPM.

UPM policy is one of continuous development. We reserve the right to amend specifications without notice or obligation.



UPM Plywood  
Niemenkatu 16  
P.O. Box 203  
FI-15141 Lahti  
Finland

Tel. +358 20 415 113  
Fax. +358 20 415 112

[www.wisa.com](http://www.wisa.com)  
[www.upm-kymmene.com](http://www.upm-kymmene.com)  
[wood@upm-kymmene.com](mailto:wood@upm-kymmene.com)